

Scale semplici con estensione di 1 ottava

Do maggiore

I 3 0 2 3 0 2 0 1 0 2 0 3 2 0 3

II 2 4 1 2 4 1 3 4 3 1 4 2 1 4 2

La minore (armonica)

I 0 2 3 0 2 3 1 2 1 3 2 0 3 2 0

II 0 1 2 4 1 -1 3 4 -4 2 1 4 2 1 0

III IV III II

La minore (melodica)

I 0 2 3 0 2 4 1 2 0 3 2 0 3 2 0

II 0 1 2 4 1 -1 3 4 -4 2 1 4 2 1 0

IV II

Sol maggiore

I 0 2 0 1 3 0 2 3 2 0 3 1 0 2 0

II 4 1 3 4 2 4 1 2 1 4 2 4 3 1 4

Mi minore (armonica)

I 2 4 0 2 0 1 4 0 4 1 0 2 0 4 2

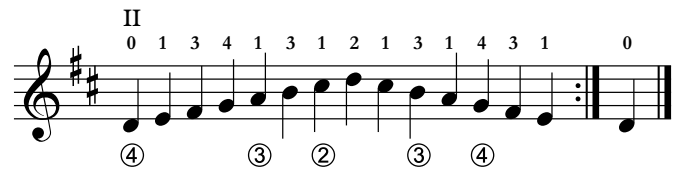
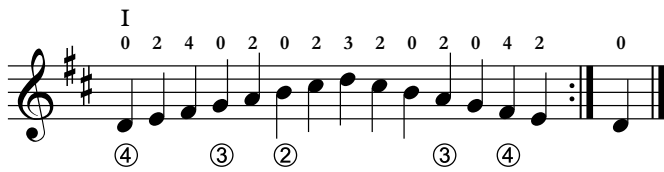
II 1 3 4 1 3 4 3 4 3 4 3 1 4 3 1

Mi minore (melodica)

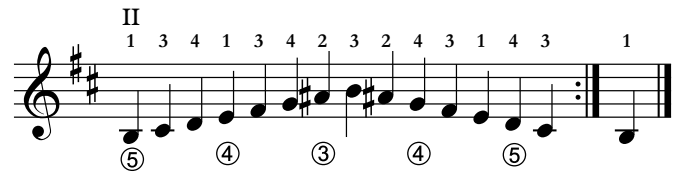
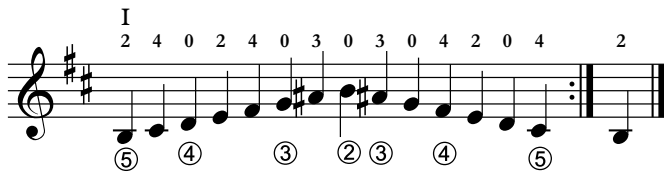
I 2 4 0 2 0 2 4 0 3 1 0 2 0 4 2

II 1 3 4 1 3 1 3 4 2 4 3 1 4 3 1

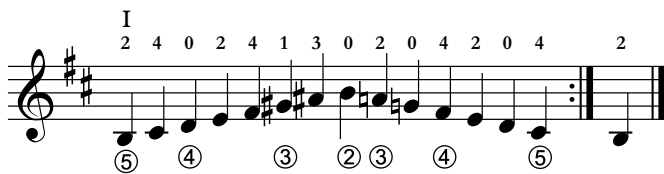
Re maggiore



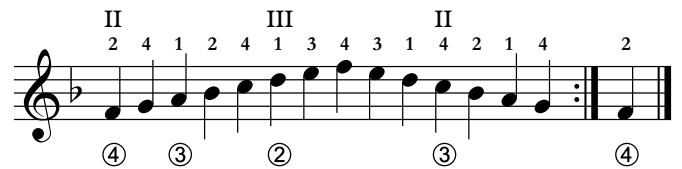
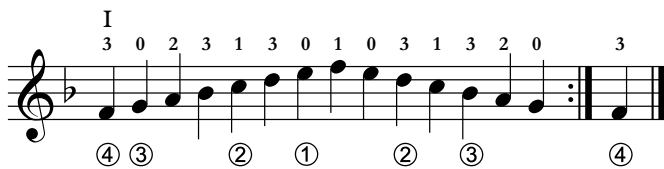
Si minore (armonica)



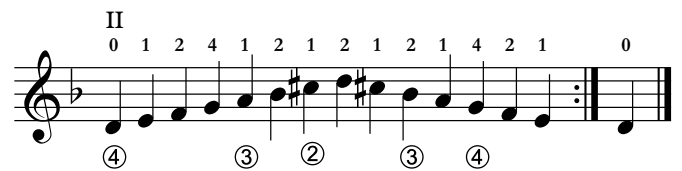
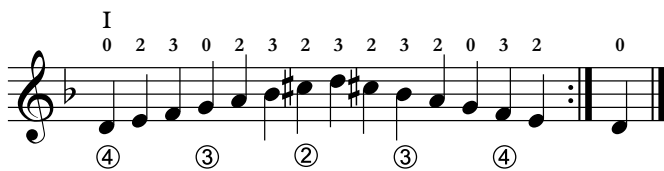
Si minore (melodica)



Fa maggiore



Re minore (armonica)



Re minore (melodica)

